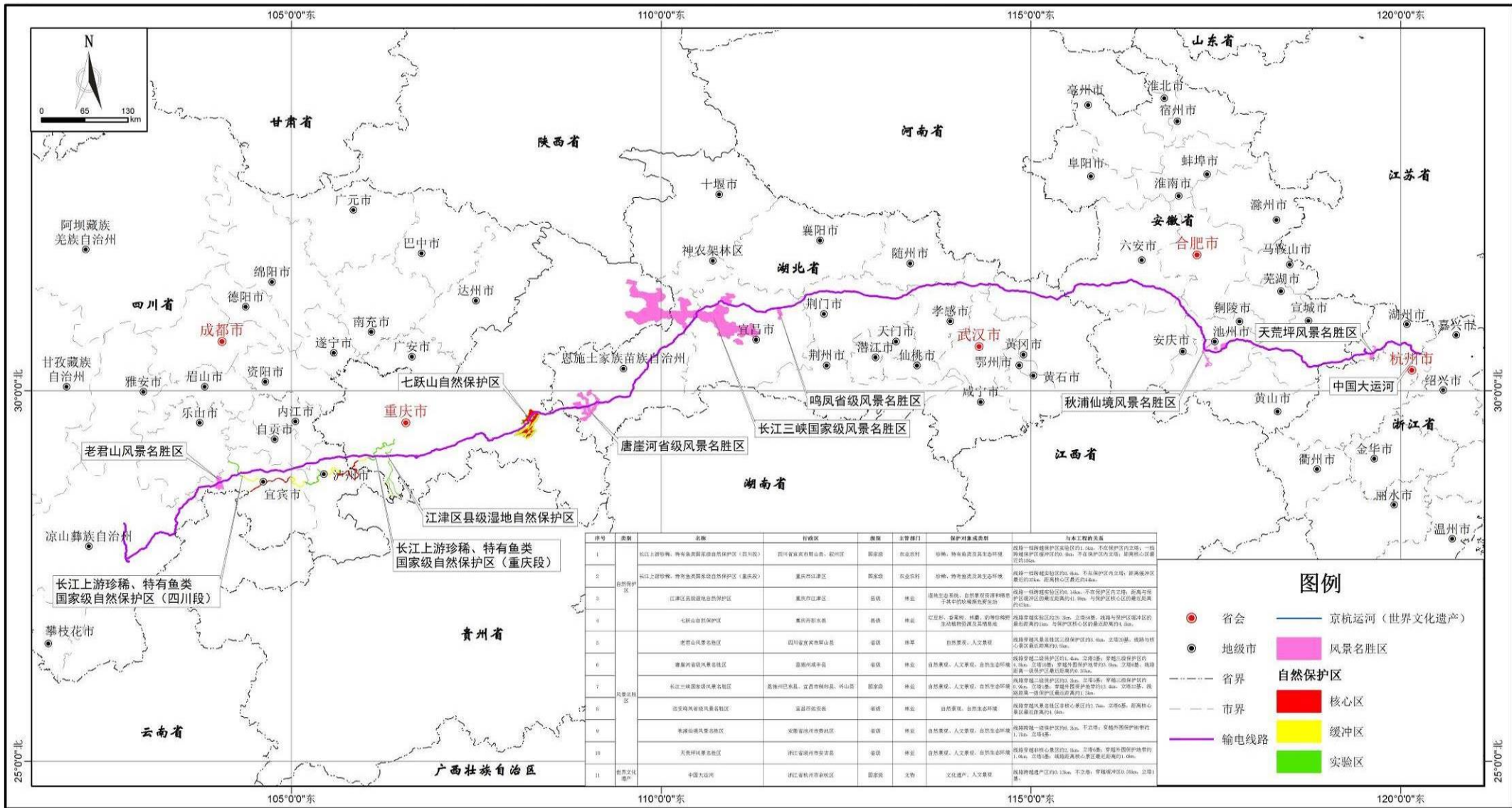
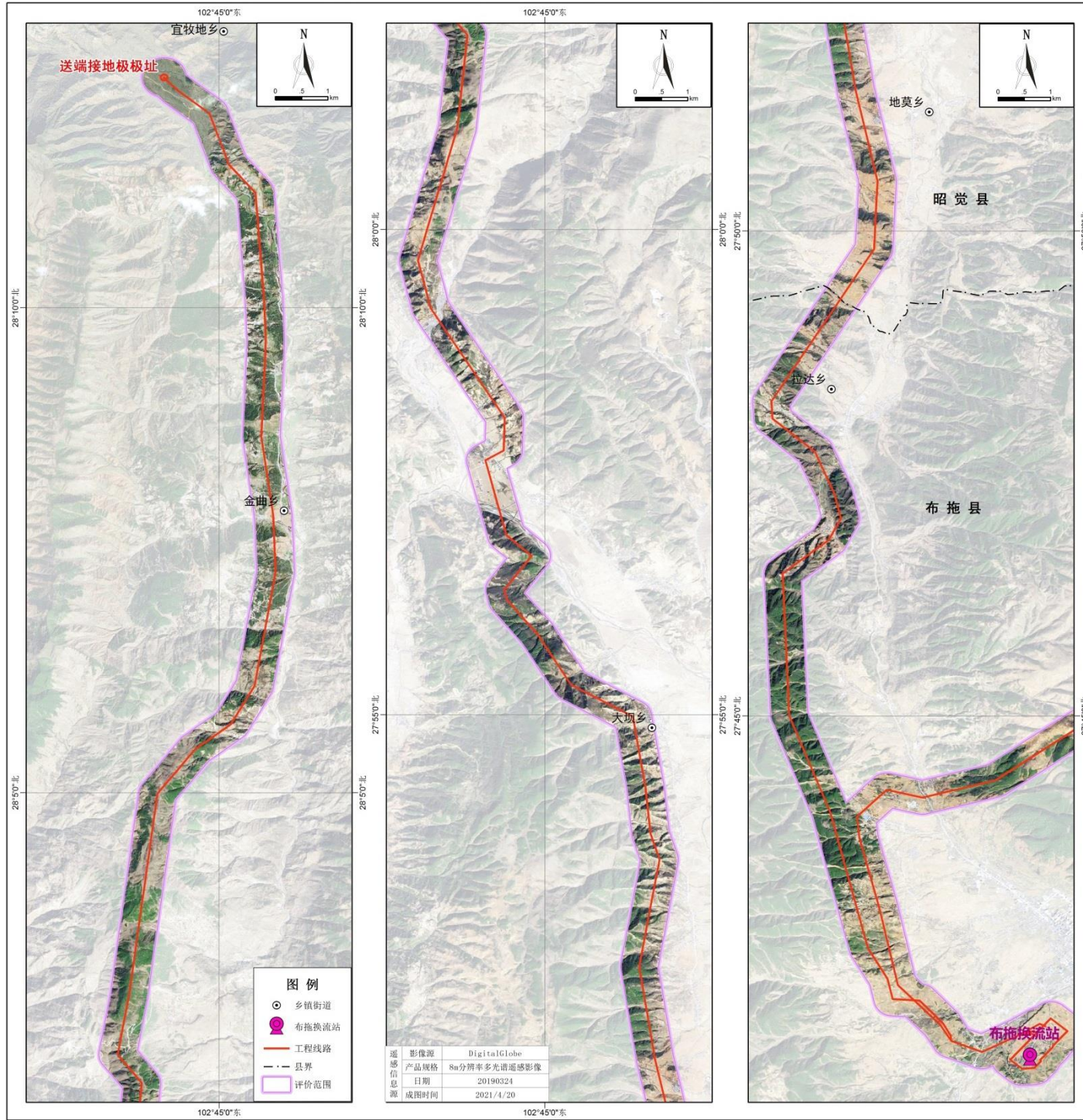
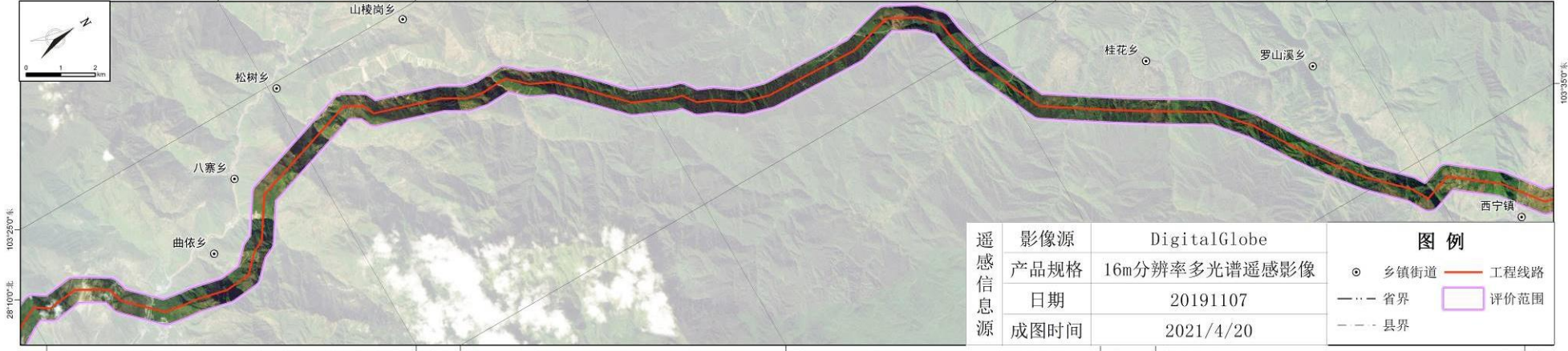
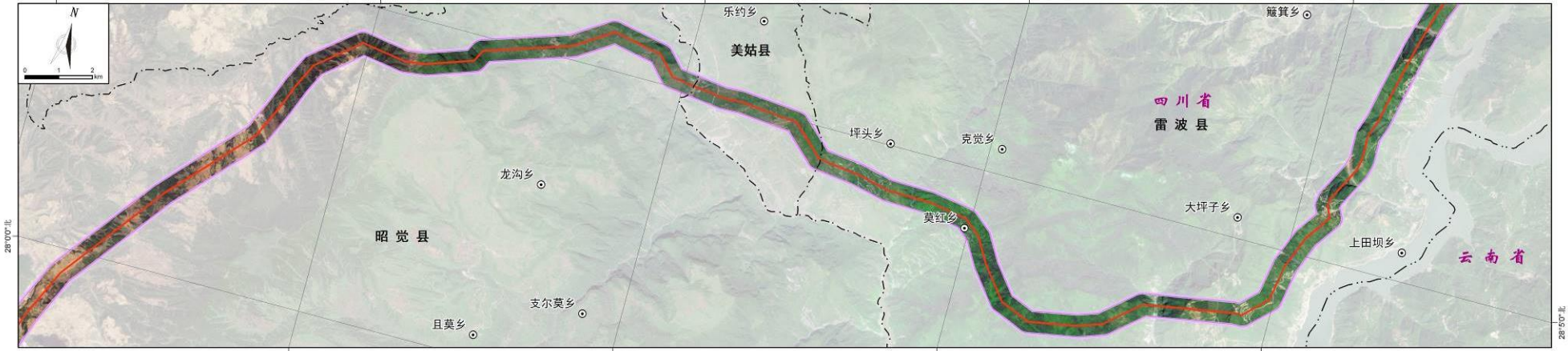
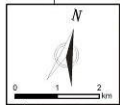
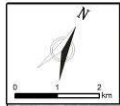
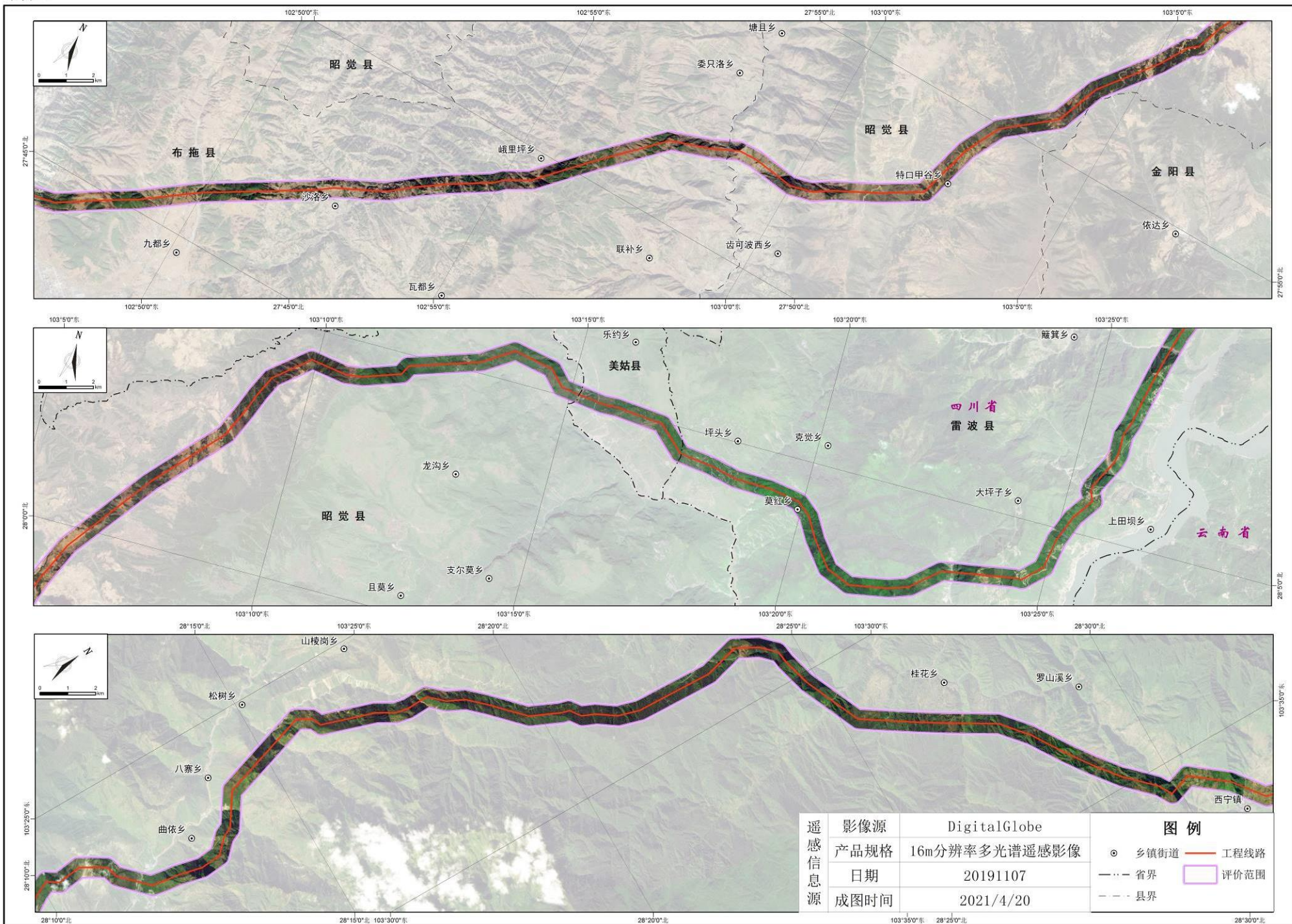


附图 4：工程沿线生态、水环境敏感区分布图

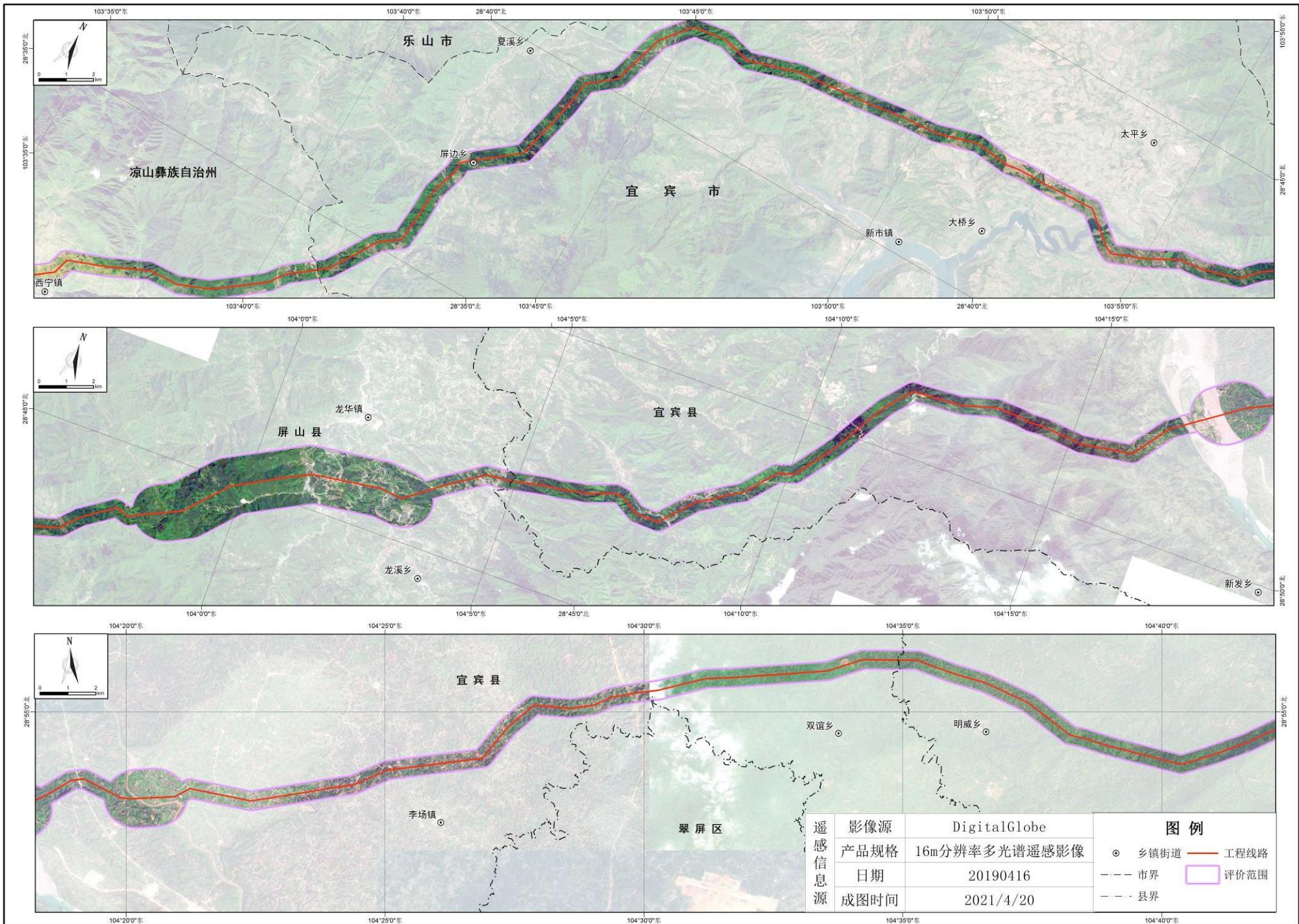


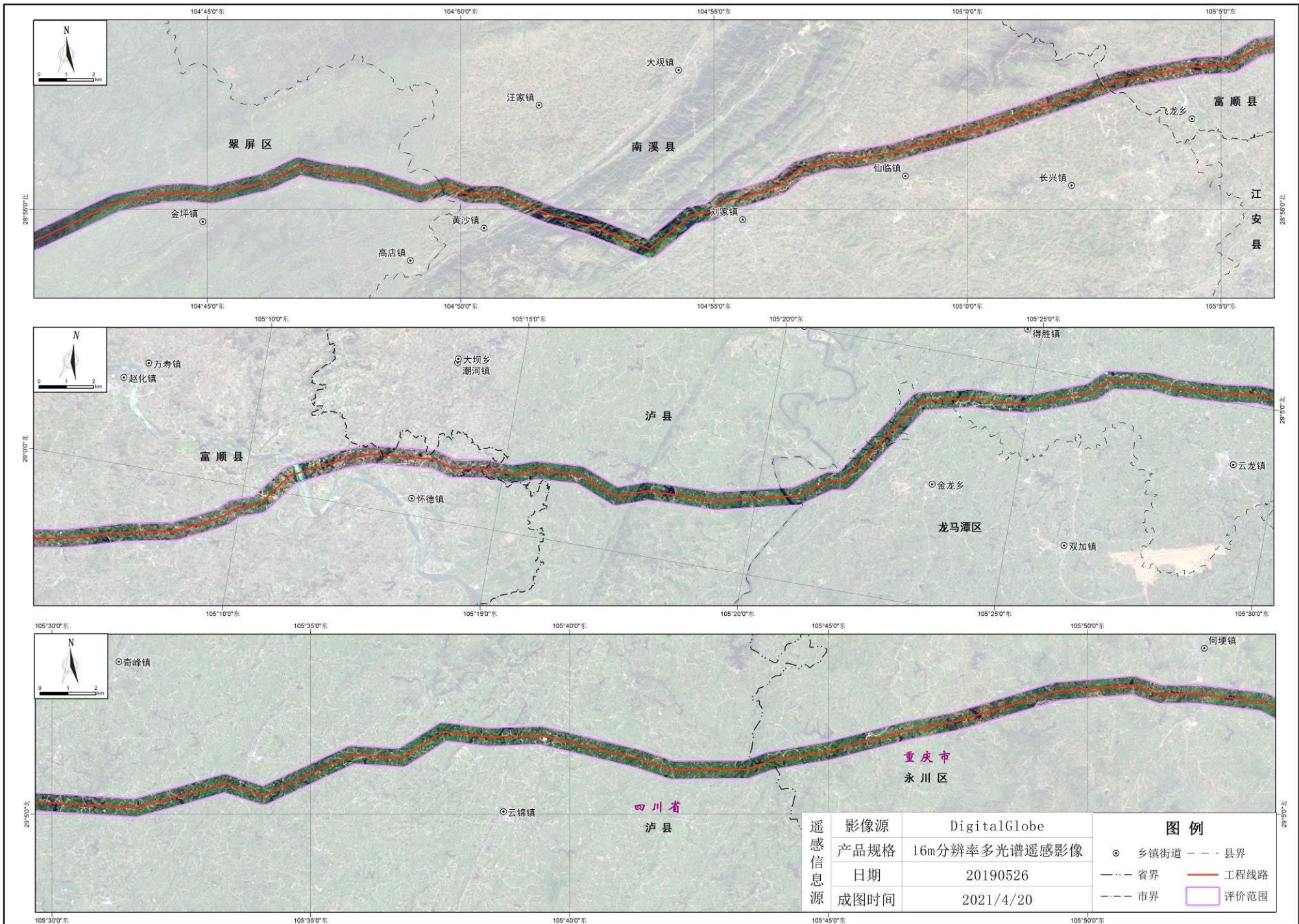
附图 5：工程沿线卫星影像图

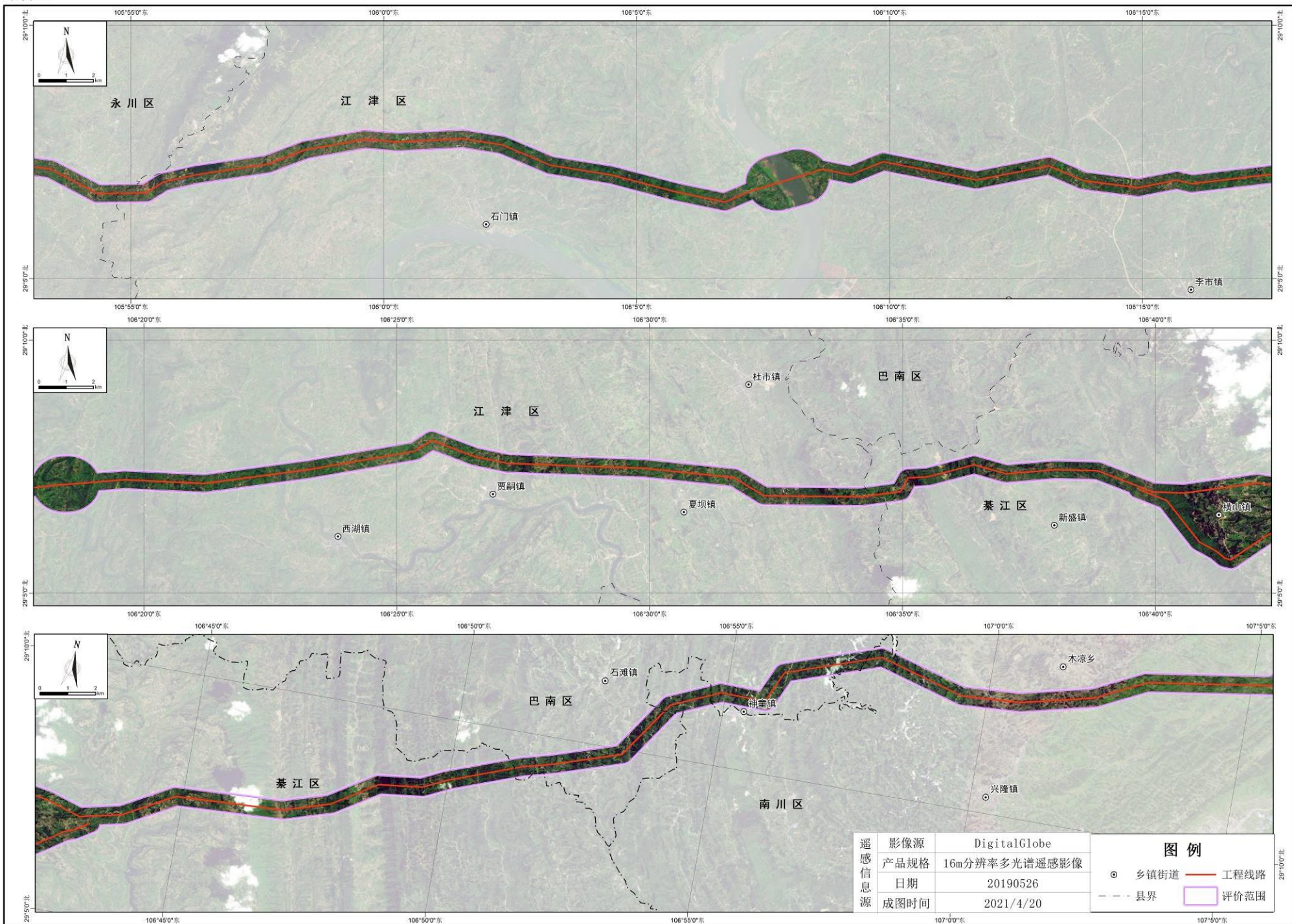


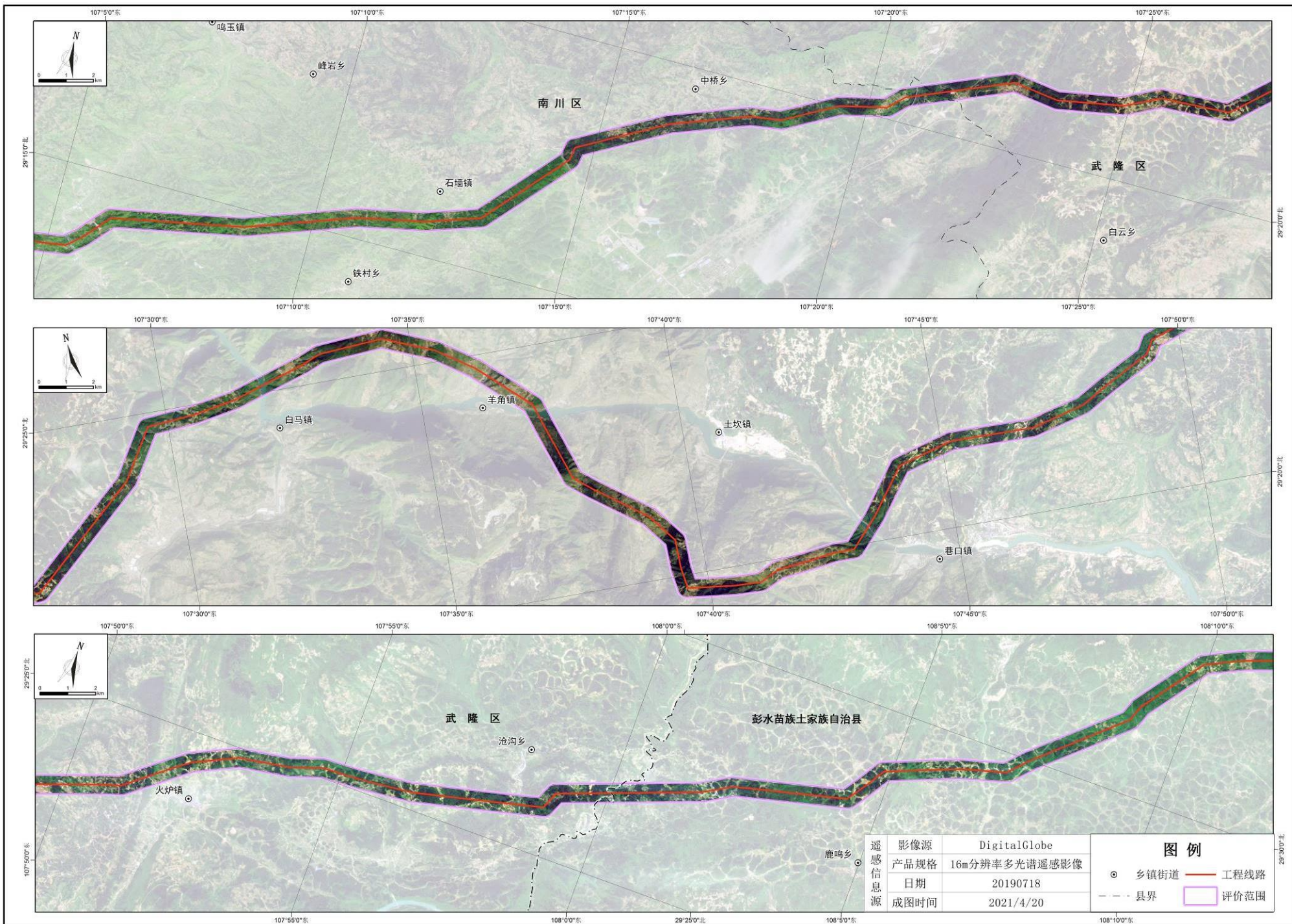


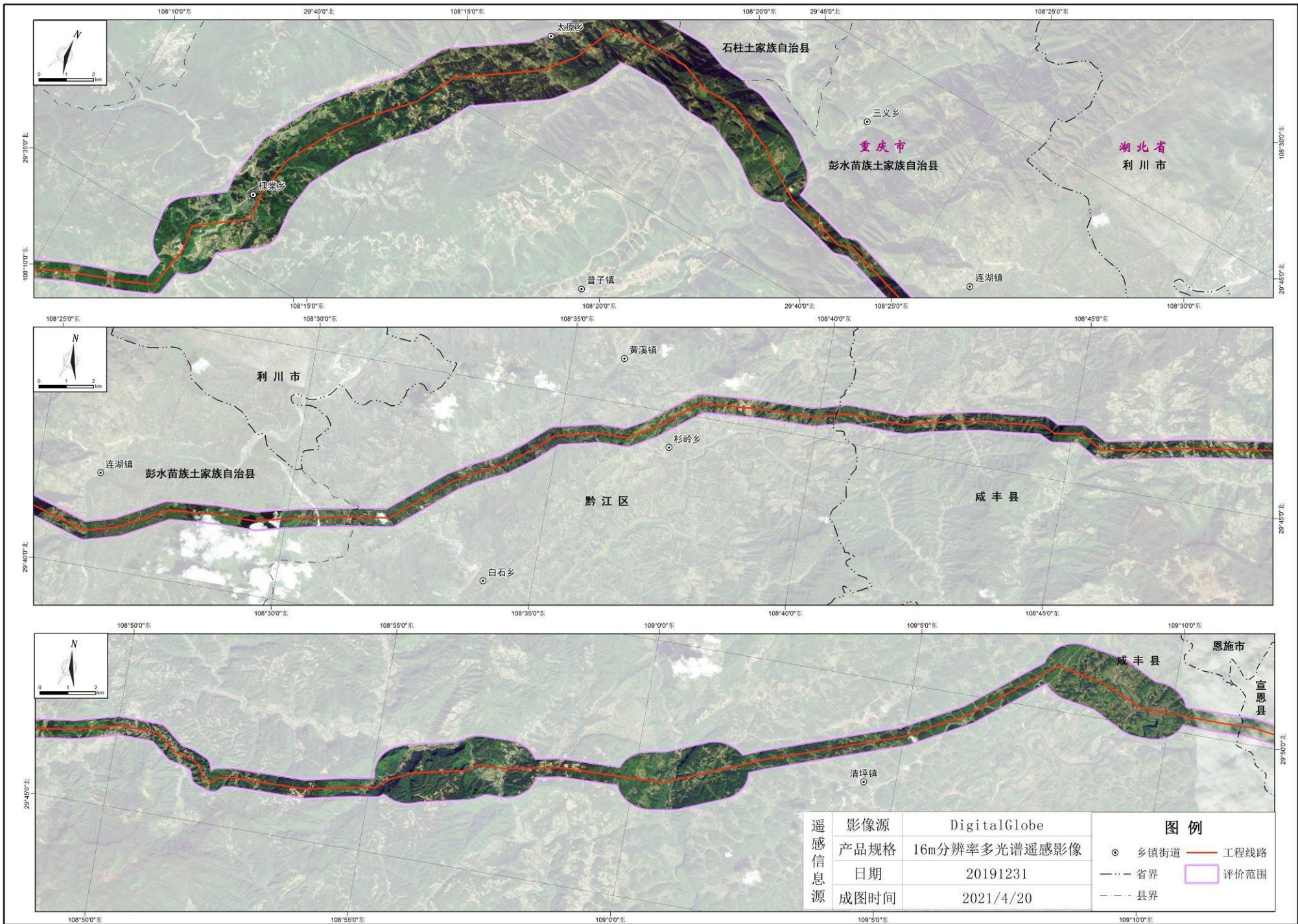










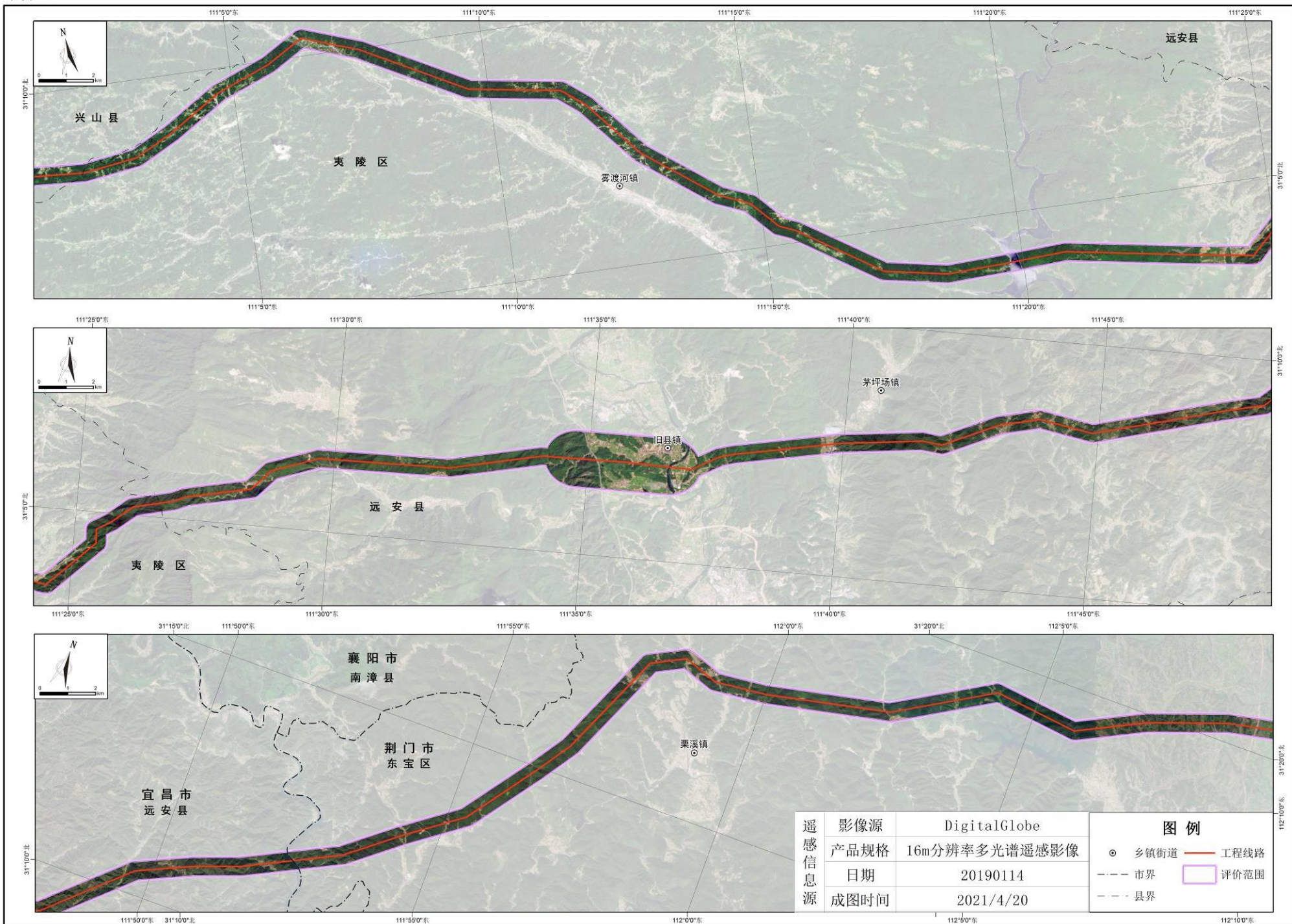


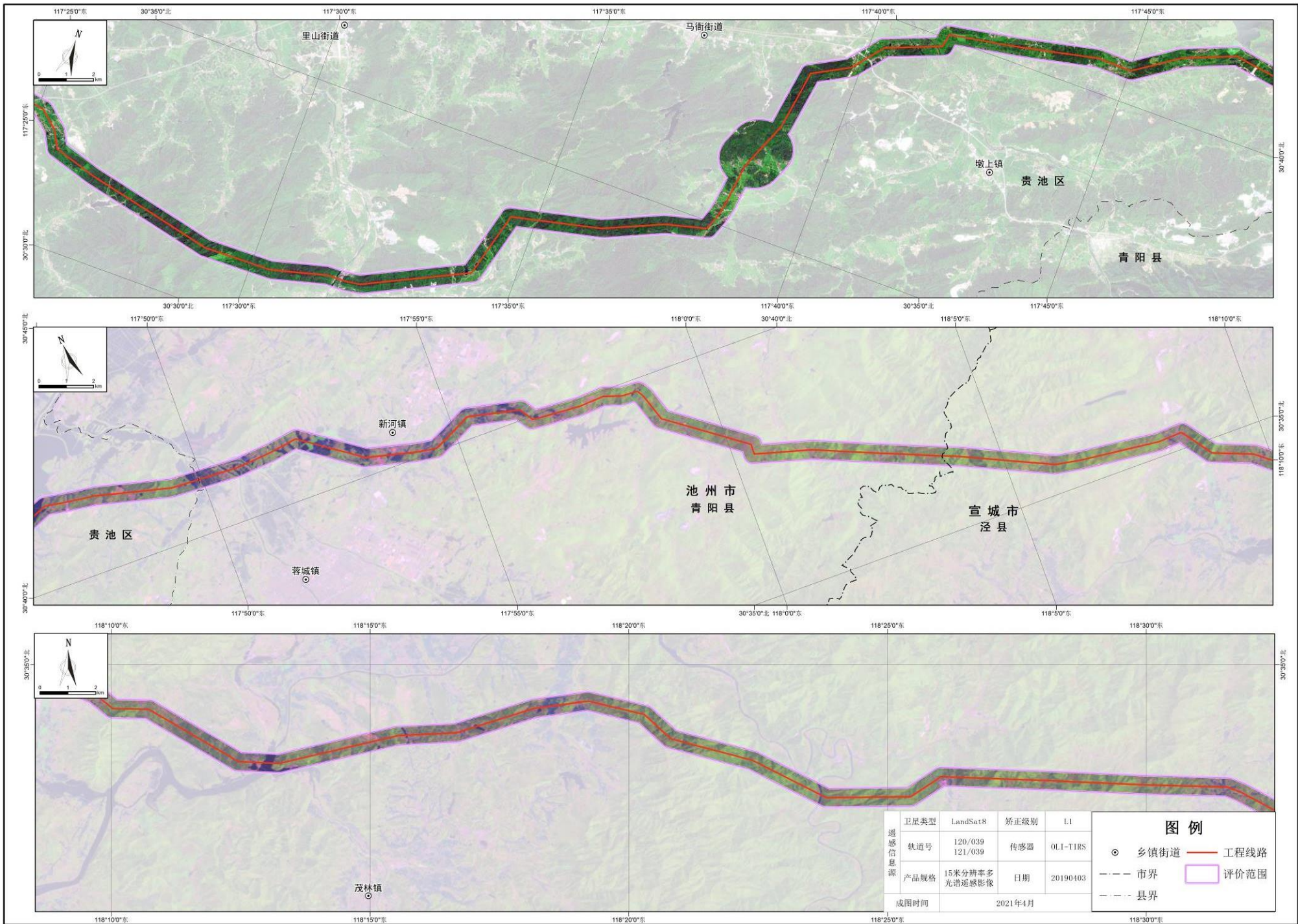
遥感信息源

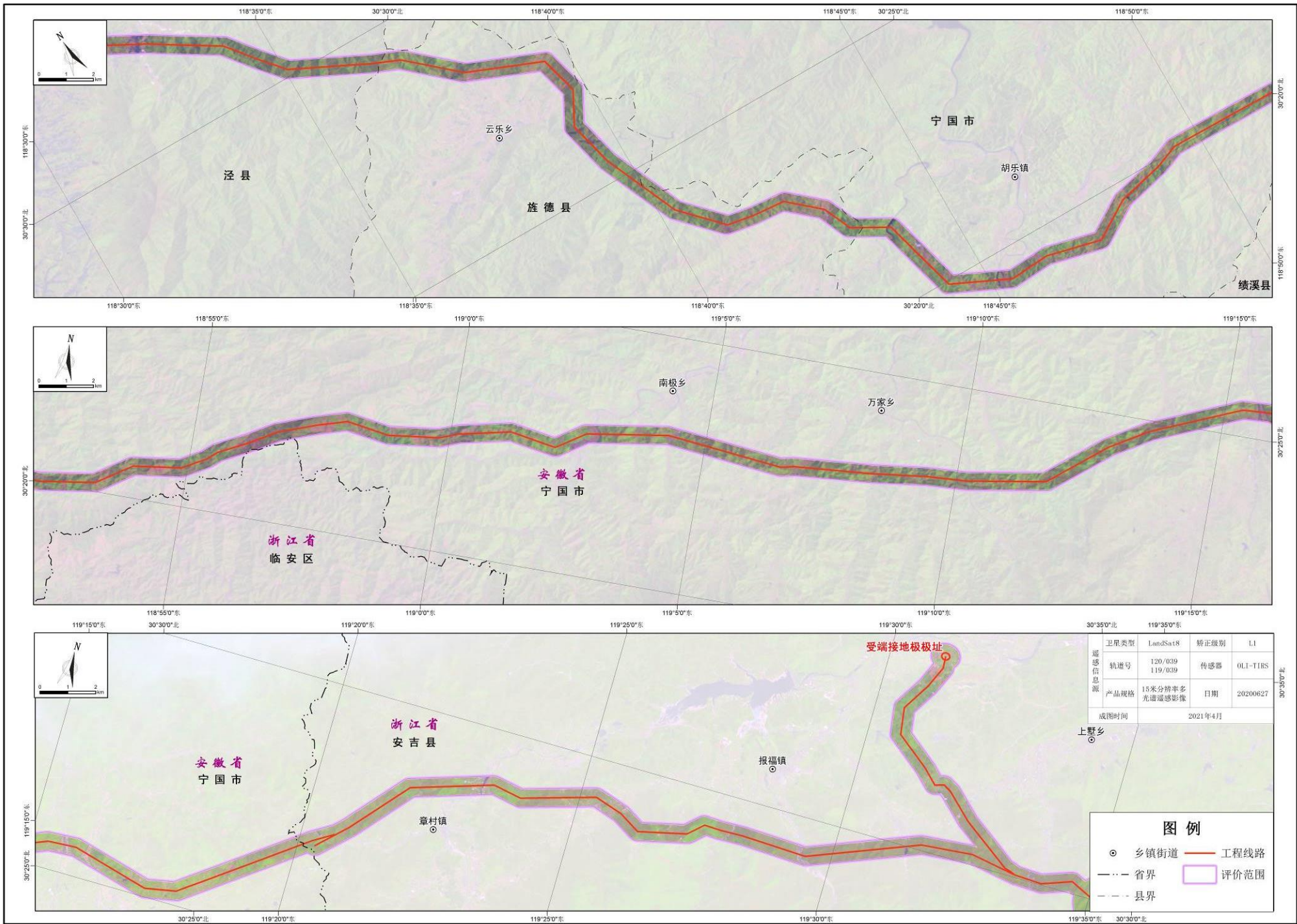
影像源	DigitalGlobe
产品规格	16m分辨率多光谱遥感影像
日期	20191231
成图时间	2021/4/20

图例

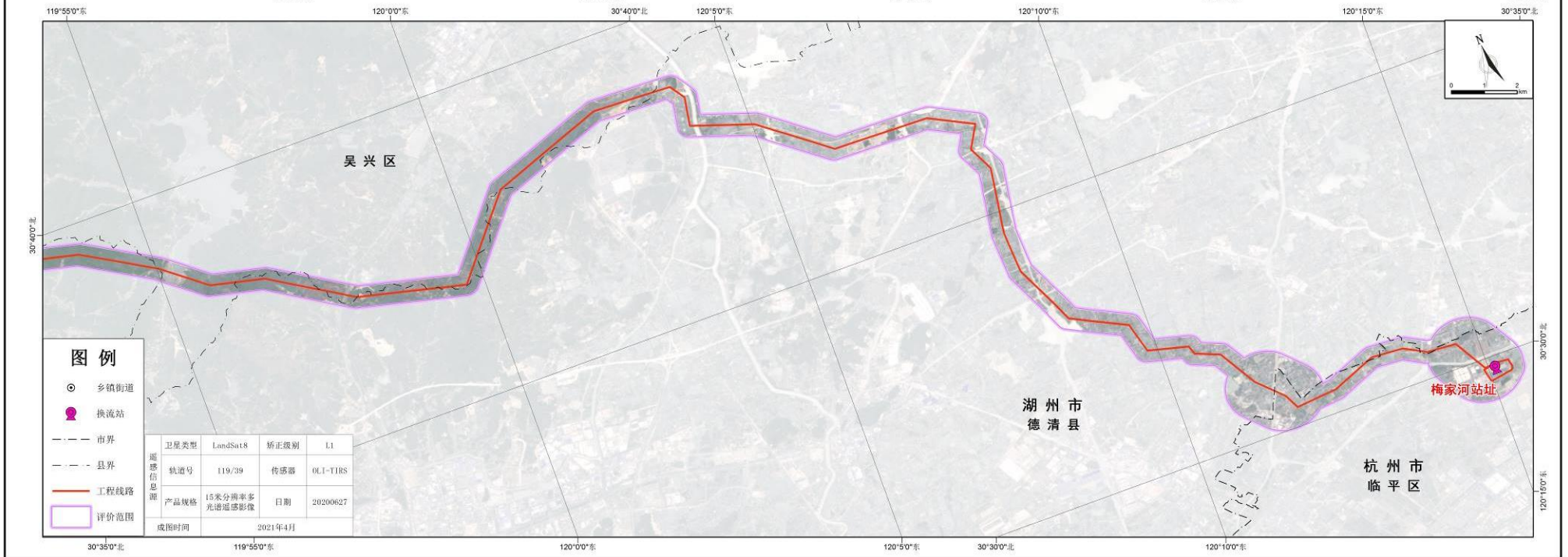
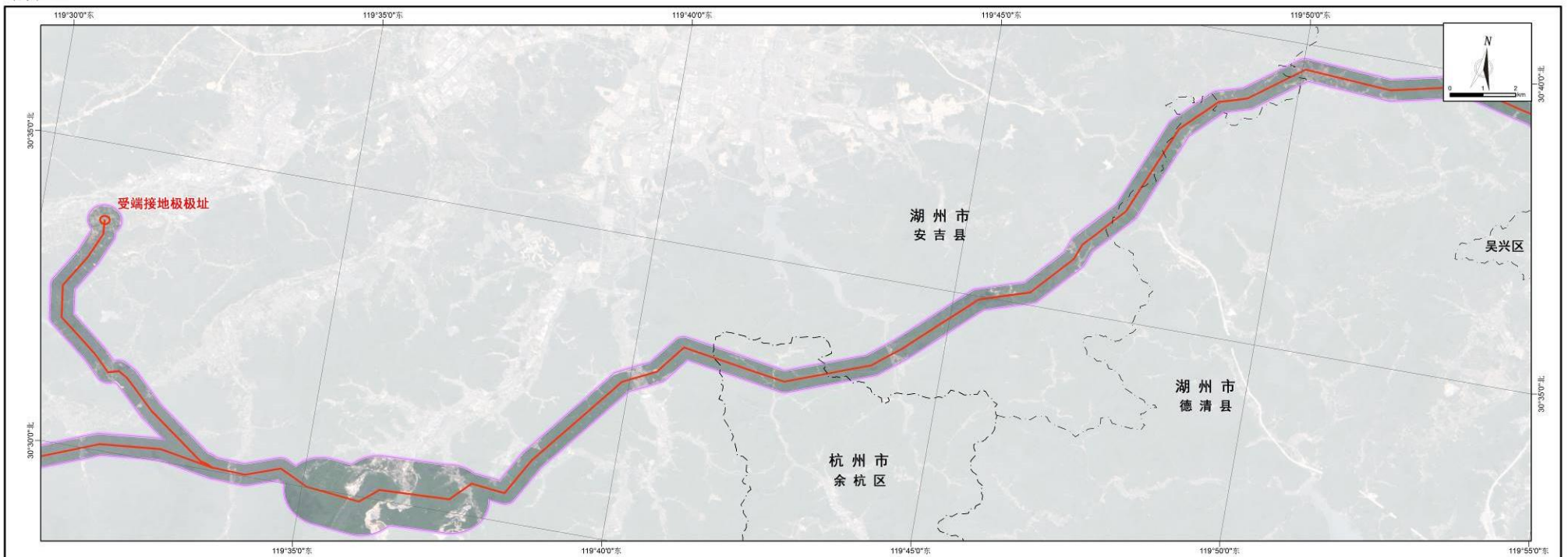
- 乡镇街道
- 省界
- - - 县界
- 工程线路
- 评价范围



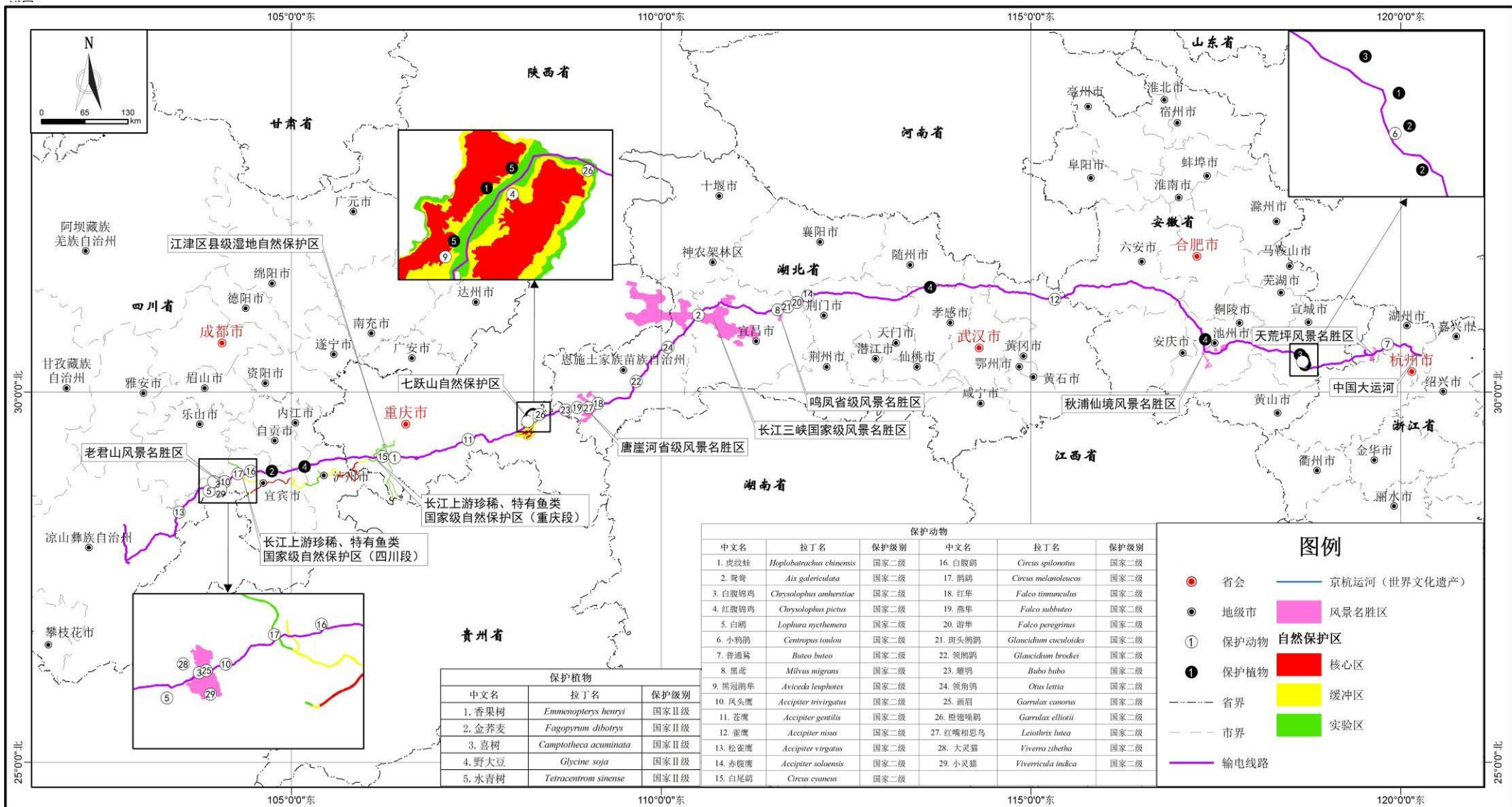




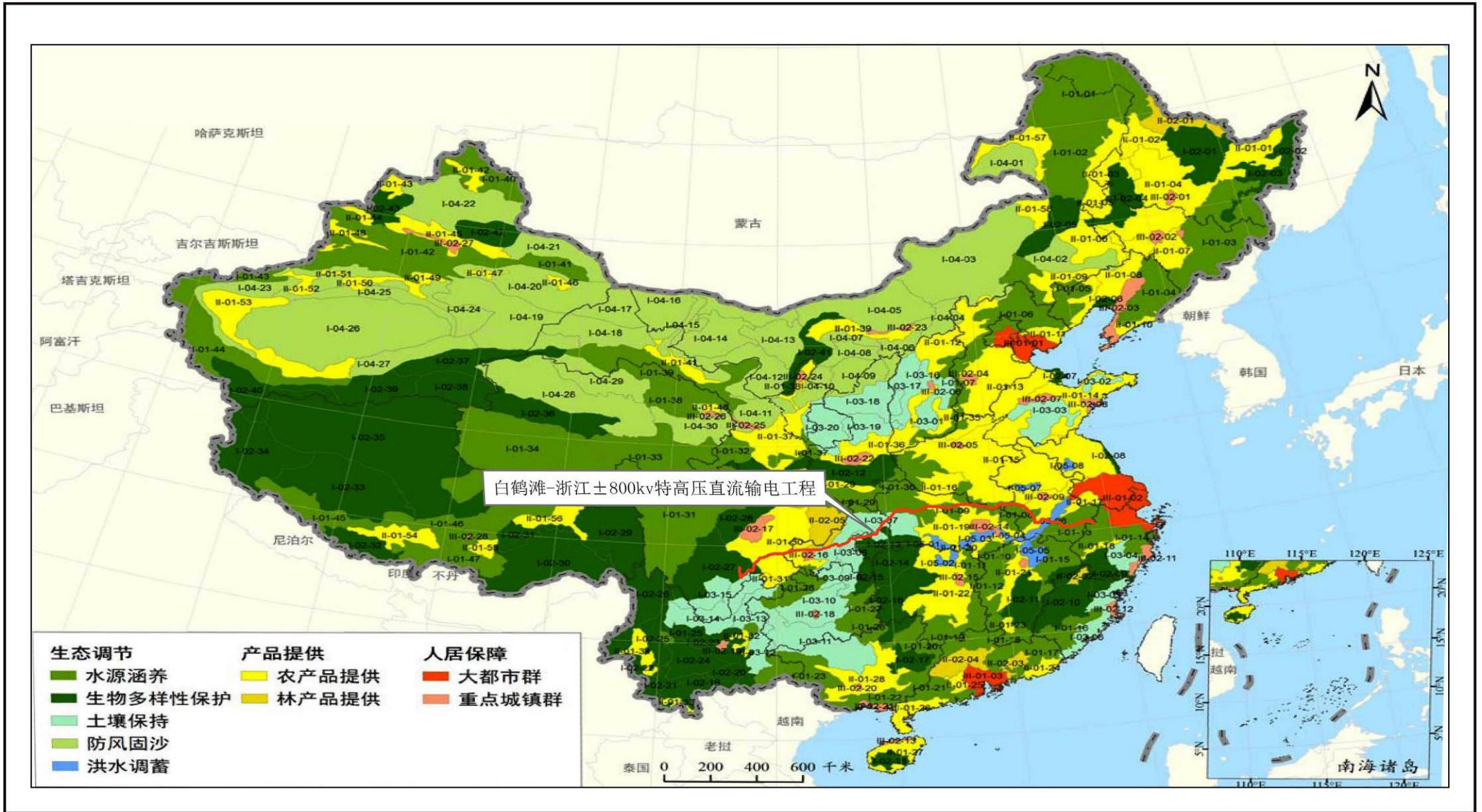




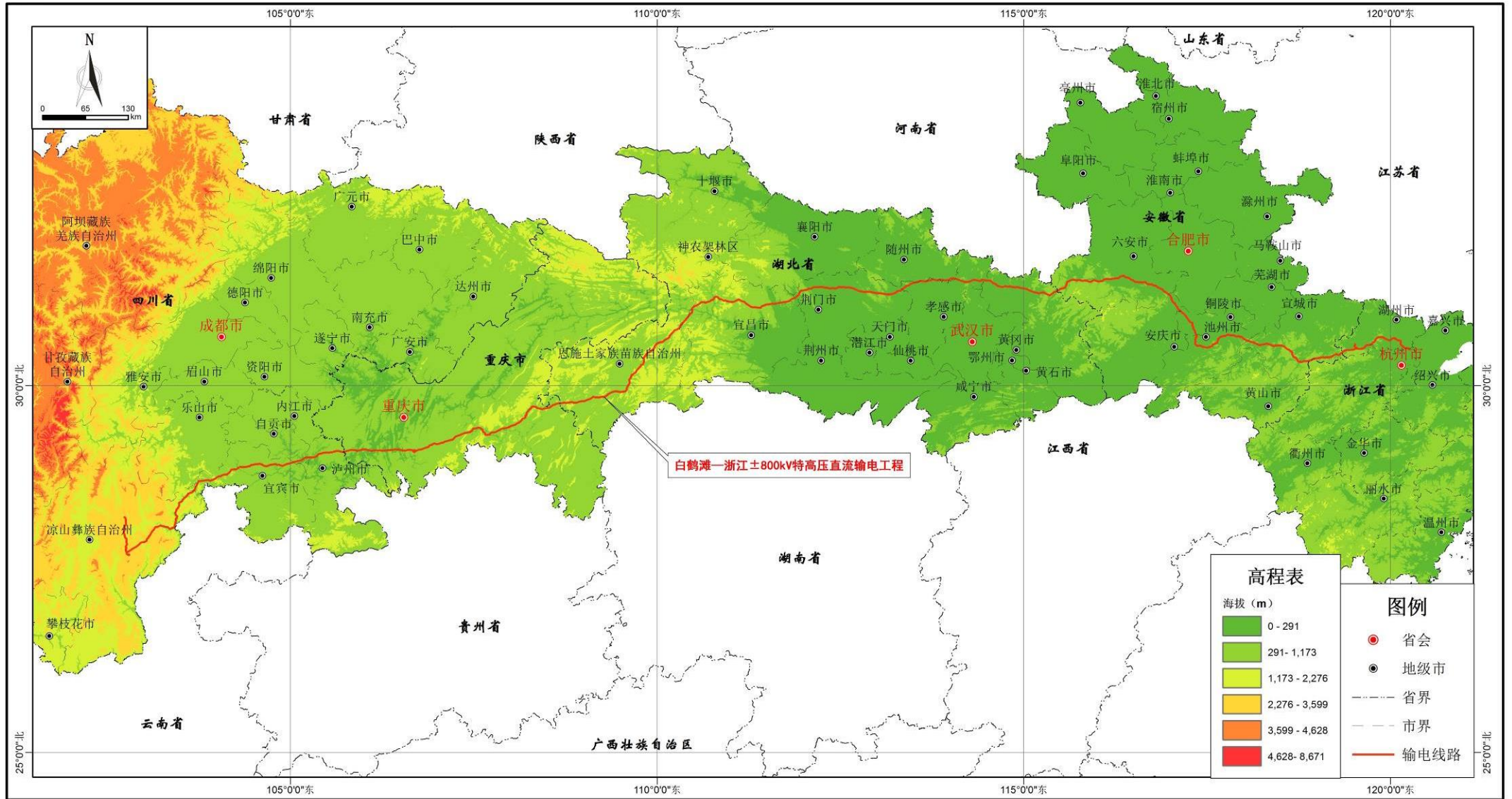
附图 6: 保护野生动植物分布示意图



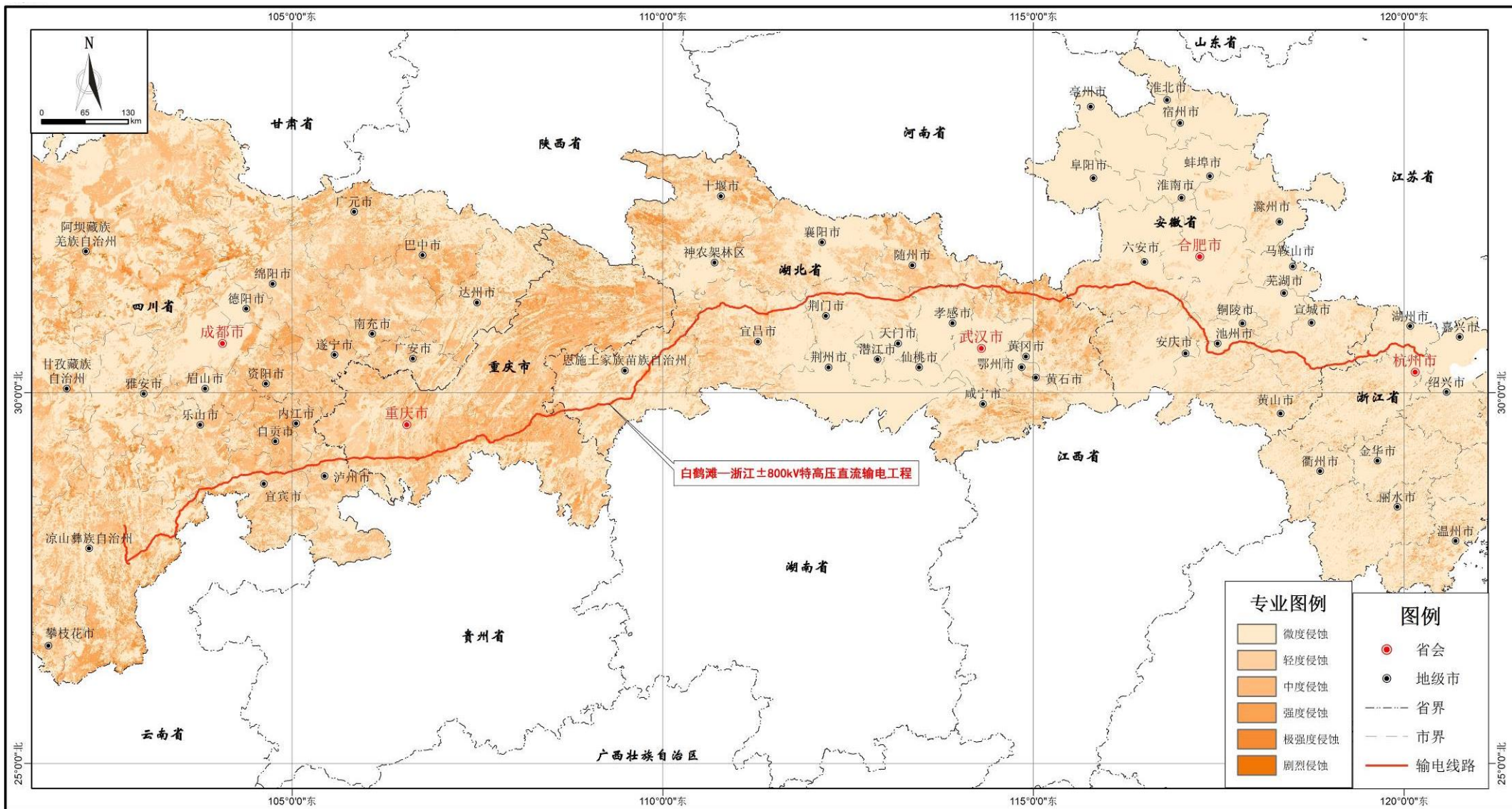
附图 7: 全国生态功能区划位置关系图



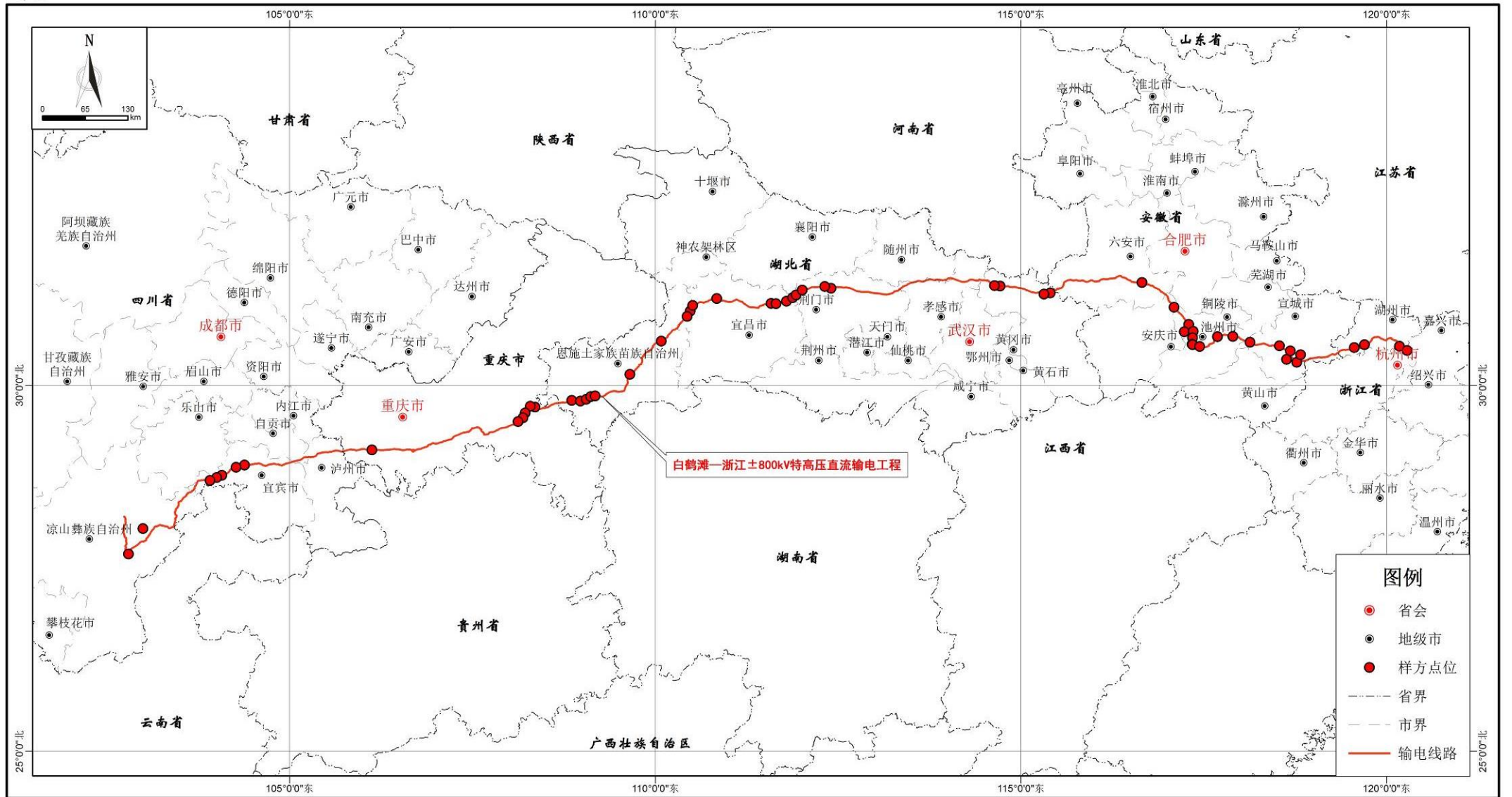
附图 8: 工程沿线地形图



附图 9: 工程沿线土壤侵蚀图



附图 10: 样方点位分布图



附图 11: 工程沿线总体植被类型图

